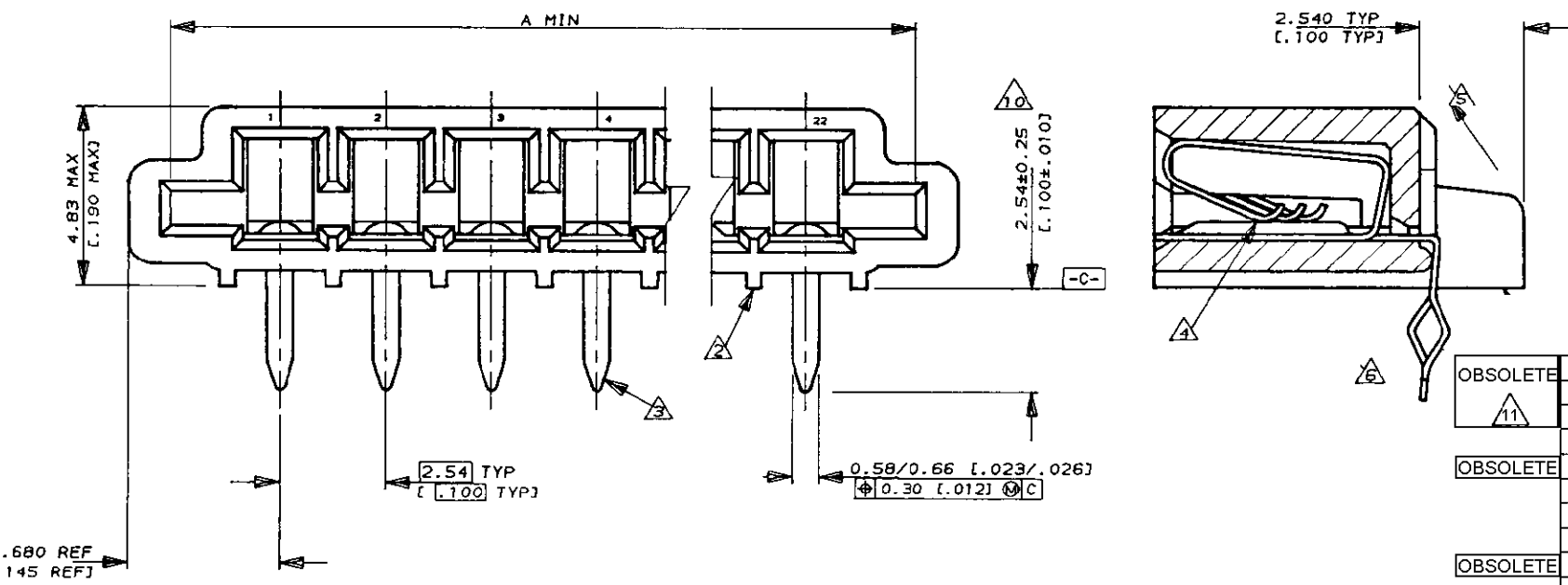
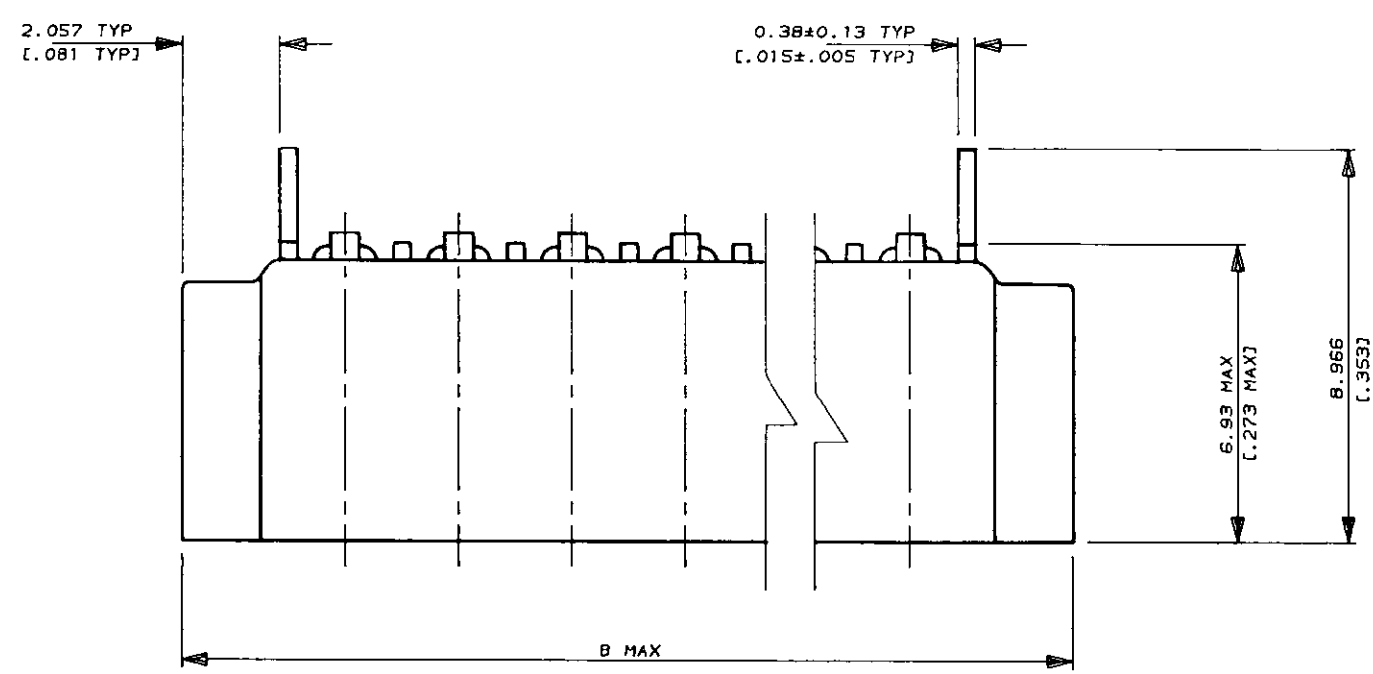


NUMBER 520314  
 METRIC  
 DIMENSIONS IN MM (INCHES). DO NOT SCALE PRINT  
 PRINT DIST



- NOTES**
- 1 CONNECTOR WILL ACCEPT FLEXIBLE PRINTED CIRCUIT OR FLAT FLEXIBLE CABLE ON 2.54 [0.100] CENTERS IN A THICKNESS RANGE OF 0.127 TO 0.381 [0.005 TO 0.015] IN CONTACT AREA
  - 2 STAND-OFFS PREVENT SOLVENT ENTRAPMENT
  - 3 LEAD-IN ON PINS FOR EASE OF INSERTION INTO BOARD
  - 4 SEQUENTIAL CONTACTS REDUCE CABLE INSERTION FORCE
  - 5 STABILIZING WING MAY BE REMOVED BY CUSTOMER IF NECESSARY
  - 6 ALTERNATING CONTACT FORM RETAINS CONNECTOR IN P.C. BOARD DURING SOLDER OPERATION
  - 7 ACCEPTS CABLE OR CIRCUITRY WITH EXPOSED CONDUCTORS FACING TOWARD OR AWAY FROM THE BOARD SURFACE
  - 8 REFER TO APPLICATION SPEC 114-2062
  - 9 MATERIAL  
HOUSING : GLASS REINFORCED POLYESTER  
THERMOPLASTIC UL 94 VO RATED, BLACK  
CONTACT : PHOS BRONZE WITH MATTE TIN FINISH.
  - 10 AREA INDICATED SHALL MEET SOLDERABILITY SPEC 109-11-1
  - 11 OBSOLETE PARTS: OBSOLETE CIS STREAMLINING PER D.RENAUD/D.SINISI

LEAD FREE				SUPERSEDED		
OBsolete	Part No	Packing	B	A	POS	Part No
<del>520314-2</del>	60.78 [2.393]	58.62 [2.308]	22	2-520314-2		<del>2-520314-2</del>
<del>520314-1</del>	58.24 [2.293]	56.08 [2.208]	21	2-520314-1		<del>2-520314-1</del>
<del>520314-0</del>	55.70 [2.193]	53.54 [2.108]	20	2-520314-0		<del>2-520314-0</del>
6-520314-9	53.16 [2.093]	51.00 [2.008]	19	1-520314-9		1-520314-9
<del>520314-8</del>	50.62 [1.993]	48.46 [1.908]	18	1-520314-8		<del>1-520314-8</del>
6-520314-7	48.08 [1.893]	45.92 [1.808]	17	1-520314-7		1-520314-7
6-520314-6	45.54 [1.793]	43.38 [1.708]	16	1-520314-6		1-520314-6
6-520314-5	43.00 [1.693]	40.84 [1.608]	15	1-520314-5		1-520314-5
<del>520314-4</del>	40.46 [1.593]	38.30 [1.508]	14	1-520314-4		<del>1-520314-4</del>
6-520314-3	37.92 [1.493]	35.76 [1.408]	13	1-520314-3		1-520314-3
6-520314-2	35.38 [1.393]	33.22 [1.308]	12	1-520314-2		1-520314-2
6-520314-1	32.84 [1.293]	30.68 [1.208]	11	1-520314-1		1-520314-1
6-520314-0	30.30 [1.193]	28.14 [1.108]	10	1-520314-0		1-520314-0
5-520314-9	27.76 [1.093]	25.60 [1.008]	9	520314-9		520314-9
5-520314-8	25.22 [0.993]	23.06 [0.908]	8	520314-8		520314-8
5-520314-7	22.68 [0.893]	20.52 [0.808]	7	520314-7		520314-7
5-520314-6	20.14 [0.793]	17.98 [0.708]	6	520314-6		520314-6
5-520314-5	17.60 [0.693]	15.44 [0.608]	5	520314-5		520314-5
5-520314-4	15.06 [0.593]	12.90 [0.508]	4	520314-4		520314-4
<del>520314-3</del>	12.52 [0.493]	10.36 [0.408]	3	520314-3		<del>520314-3</del>
5-520314-2	9.98 [0.393]	7.82 [0.308]	2	520314-2		520314-2

Copyright ©1993					Copyright ©1993 TE MFG (S) PTE LTD. ALL RIGHTS RESERVED.					<b>STE</b> TE Connectivity				
S3	ECR-10-022530	KK	HMR	07FEB11	(WIRE RANGE)	(INSULATION DIA.)	(NAME)	TRIOMATE HORIZONTAL CABLE ENTRY FOR 1.57 [0.062] THK P.C. BOARD						
S2	ECO-10-000445	KK	AEG	11JAN10	mm <sup>2</sup> (AWG - )	mmØ								
S1	REVISED AS PER ECR-06-04332	PM	KS	21FEB06	(MATERIAL)	(FINISH) CONTACTS MATTE TIN/LEAD PLATED	(GENERAL TOLERANCE)	SIZE	LOC	(No.)	520314			
S	REVISED FRO00-0011-04	SD	PCH	19FEB04			±.38	A3	DY					
R	REVISED DY/EC/0920	LWY	SL	13.12.93	DR. WYLEE 30.7.93	DE. A.SOH	[±.015]	(SCALE)	REV.	SHEET	1 OF 1			
Q	REDRAWN DY/EC/0784	LWY	SL	30.7.93	CHK. SALLY 30.7.93	APP. PETER de JONG		6:1	S3					
LTR	(REVISION RECORD)	DR	CHK	DATE										

(CUSTOMER DRAWING)